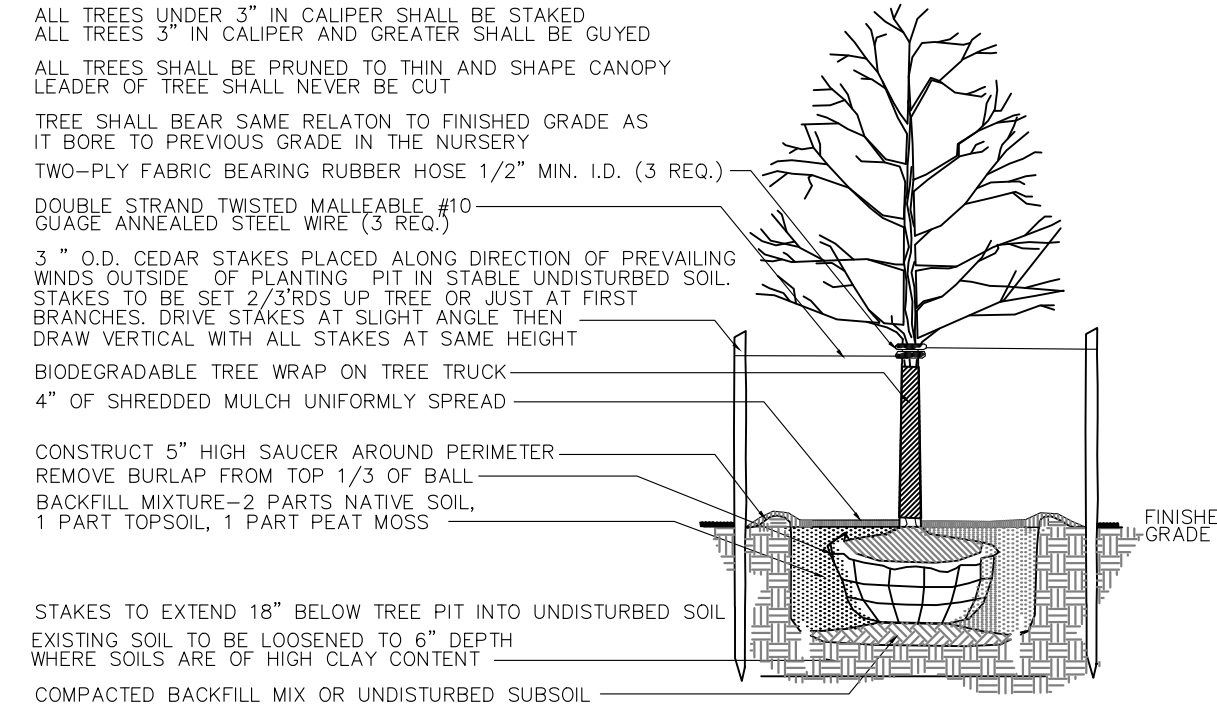
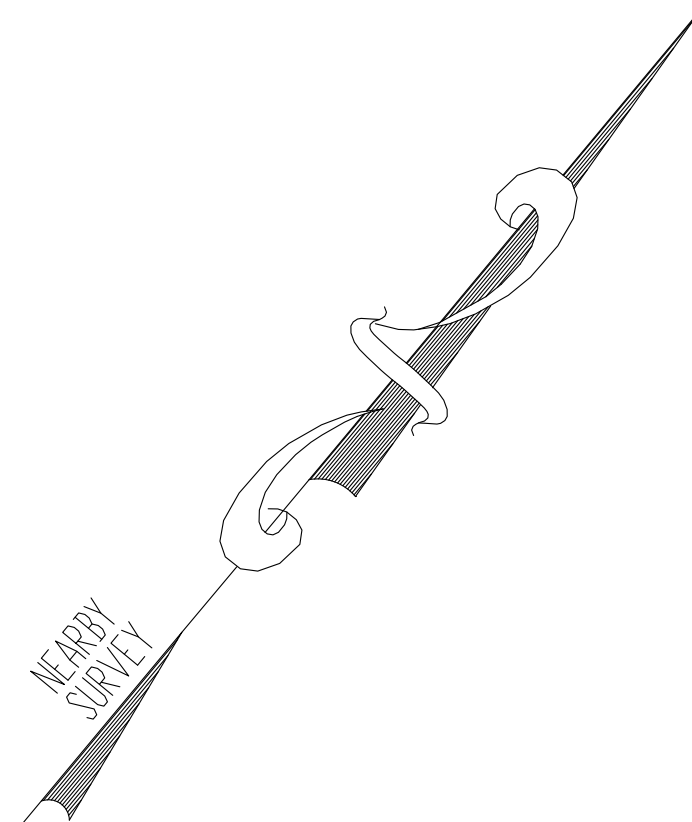
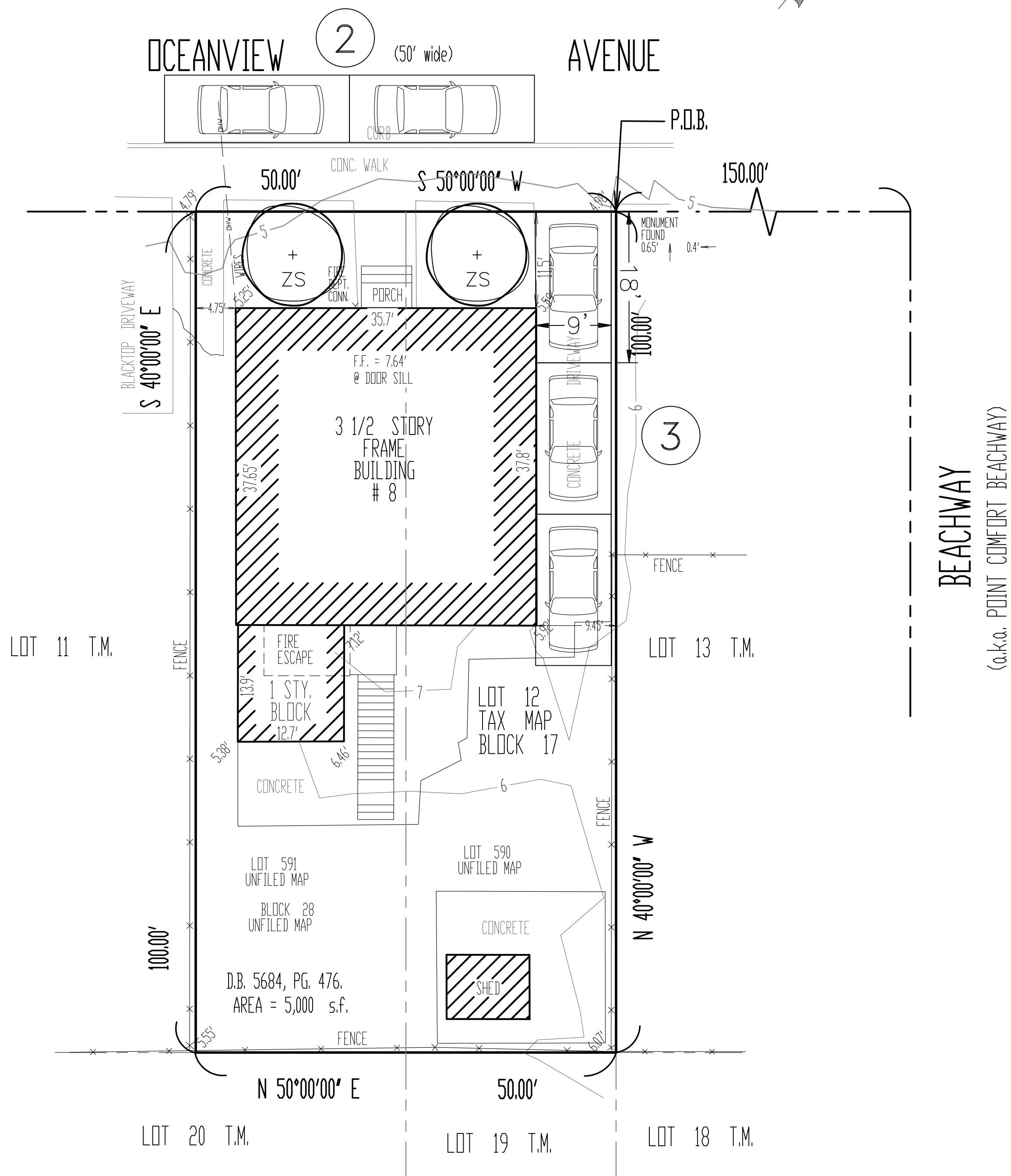


COPYRIGHT © 2022, EAST POINT ENGINEERING, LLC - ALL RIGHTS RESERVED
THIS SHEET IS THE PROPERTY OF EAST POINT ENGINEERING, LLC. NO PART OF THIS SHEET
OR THE CONTENTS HEREON MAY BE REPRODUCED OR TRANSMITTED IN ANY FORM OR BY ANY MEANS
ELECTRONIC OR MECHANICAL, INCLUDING PHOTOCOPYING, RECORDING, OR BY ANY INFORMATION
STORAGE AND RETRIEVAL SYSTEM, WITHOUT PERMISSION IN WRITING FROM EAST POINT ENGINEERING, LLC.

NOTE: ANY EXCESS
MATERIALS EXCAVATED
FROM THE SITE SHALL BE
DISPOSED OFF AT AN
OFF-SITE LOCATION.



DECIDUOUS TREE PLANTING DETAIL

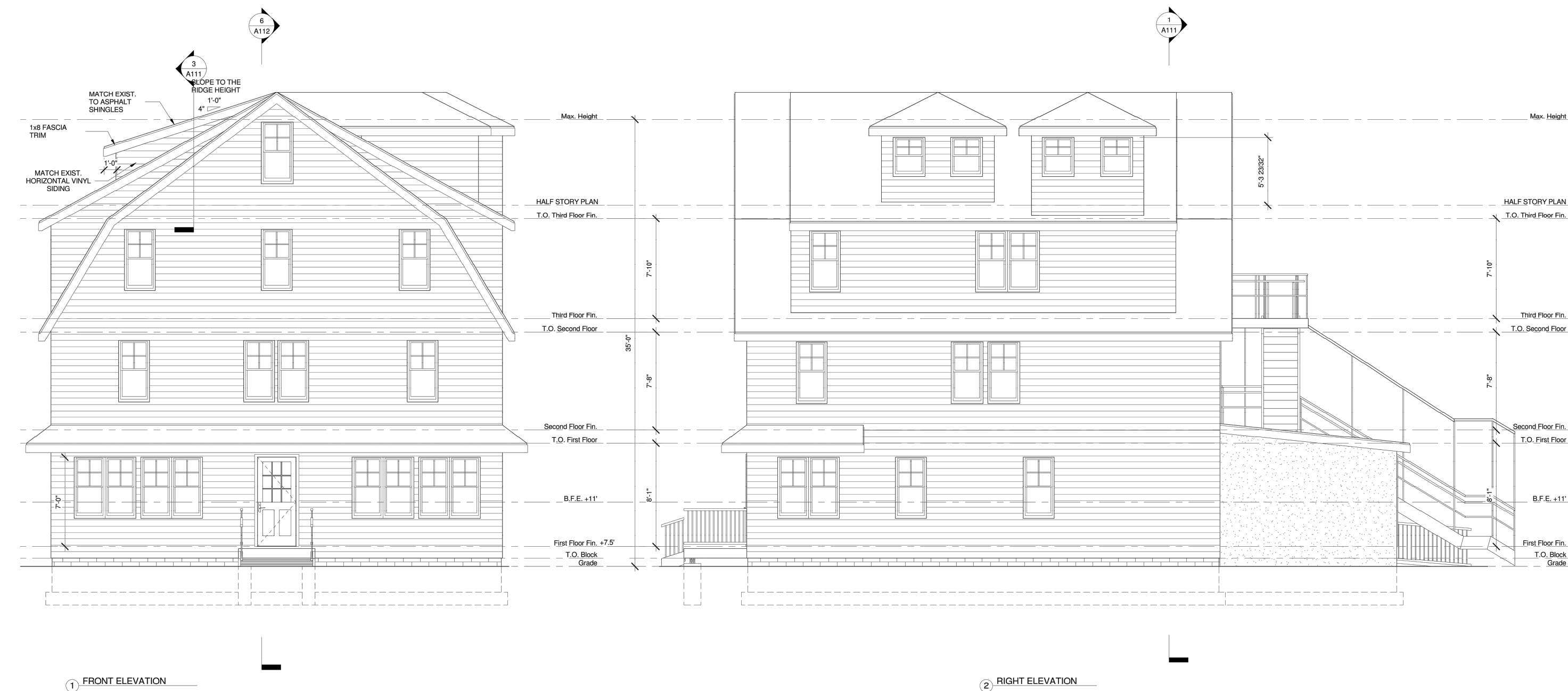
N.T.S.

SITE IMPROVEMENT NOTES

- ALL SIGNS, STRIPING, AND DEVICES FOR THE MAINTENANCE AND PROTECTION OF TRAFFIC SHALL BE IN ACCORDANCE WITH THE "MANUAL ON UNIFORM TRAFFIC CONTROL DEVICES" (M.U.T.C.D.), LATEST EDITION.
- REFER TO ARCHITECTURAL PLANS FOR PROPOSED BUILDING RENOVATION AND SIGNAGE.
- NO LOADING/UNLOADING ZONES OR STORAGE AREAS ARE NECESSARY OR PROPOSED.
- SIDEWALKS, APRONS, RAMPS, AND CURBS TO BE CONSTRUCTED OF N.J.D.O.T. CLASS "C", 4,500 PSI CONCRETE OR AS INDICATED IN THE CONSTRUCTION DETAILS.
- SHOP DRAWINGS SHALL BE SUBMITTED TO THE MUNICIPAL ENGINEER FOR REVIEW AND APPROVAL PRIOR TO COMMENCING WORK.

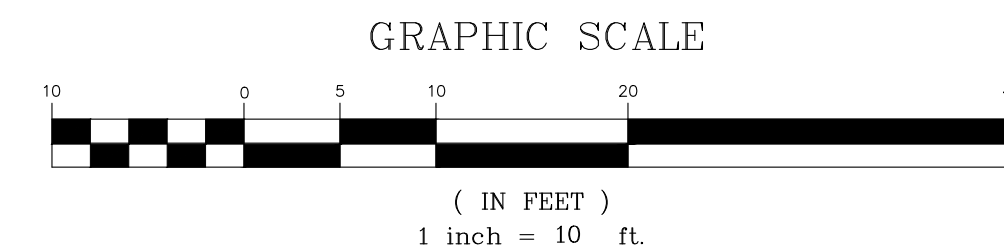
SCHEDULE OF PLANTING MATERIALS

KEY	QTY.	BOTANICAL NAME	COMMON NAME	SIZE
AR	2	ACER RUBRUM 'RED SUNSET'	RED SUNSET MAPLE	2.5" CA, 11'-12', B&B



ARCHITECTURAL ELEVATIONS

N.T.S.



NO.		DATE		DESCRIPTION	
USE VARIANCE SITE PLAN 8 OCEANVIEW AVENUE USE VARIANCE PLAN BLOCK 17, LOT 12 TAX MAP SHEET NO. 5					
BOROUGH OF KEANSBURG MONMOUTH COUNTY, NEW JERSEY					
		EAST POINT ENGINEERING, LLC		11 South Main Street Marlboro, NJ 07746 Tel: 732.577.0180	
NEW JERSEY CERTIFICATE OF AUTHORIZATION NO. 246A28169800		DATE: 06-01-22		PROJECT NUMBER: 22-005	
MARC S. LEBER N.J. PROFESSIONAL ENGINEER, LICENSE NO. 24604452400 N.J. PROFESSIONAL PLANNER, LICENSE NO. 33L00589600		SCALE: 1" = 10'		CHECKED BY: BNP	
		DATE: 06-01-22		SHEET NO. 2 OF 2	